

THT-100CSTG Transparent Full Height Turnstile



Security with a clear view

With Boon Edam's THT-100CSTG transparent turnstiles, you don't have to sacrifice aesthetics for high security entrance control. Transparent arms and shields create an open appearance and all models are compatible with any access control system.

The THT-100CSTG incorporates three large clear Lexan panels per rotor section with the same material used for the dual shields on each side. Standard feature is a large, curved Lexan shield on each side, while a segmented shield design (shown above) is also available.

The CSTG is ideal for indoor applications requiring moderate throughput as two-way traffic is allowed in one direction at a time.

'Large, clear panels and shields create an open appearance'

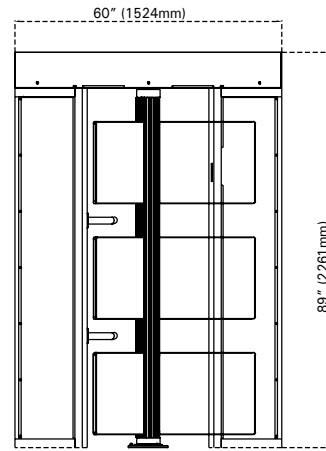
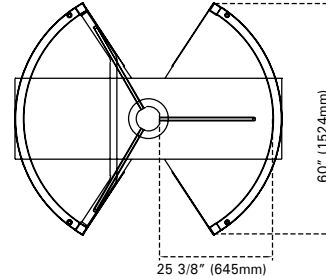
Construction

- Available in anodized aluminum. Panels are fabricated from 3/4" thick transparent material. Maximum open space between arms is 5" to prevent access.
- All materials meet ASTM standards.
- Hydraulic dampener controls rotation speed, ensures smooth operation, reduces vandalism and increases operating life even under the toughest conditions.
- Sealed top and bottom bearings provide free, easy rotation even in challenging environments.
- Electric turnstiles use a heavy duty electromechanical ratchet and pawl operating mechanism to restrict traffic flow.

Dimensions

Model	Height	Width	Depth	Interior Height	Shipping Wt.
THT-100CSTG	89"	60"	52 5/16"	81"	1000 lbs.

THT-100CSTG FOOTPRINT



Features & options

Characteristics	Std	Opt
Free or Locked Exit (for mechanical direction)	•	
Fail Lock or Fail Safe (for electrical direction)	•	
Pulse Relay	•	
Hydraulic Speed Control	•	
Time-Out Relay	•	
Key Bypass		•
Remote Pushbutton		•
Home Position Switch		•
Rotation Detection Switch		•
Key Bypass*		•
Red & Green Indicator Lights		•
Heel Protectors		•
Card Reader Box		•

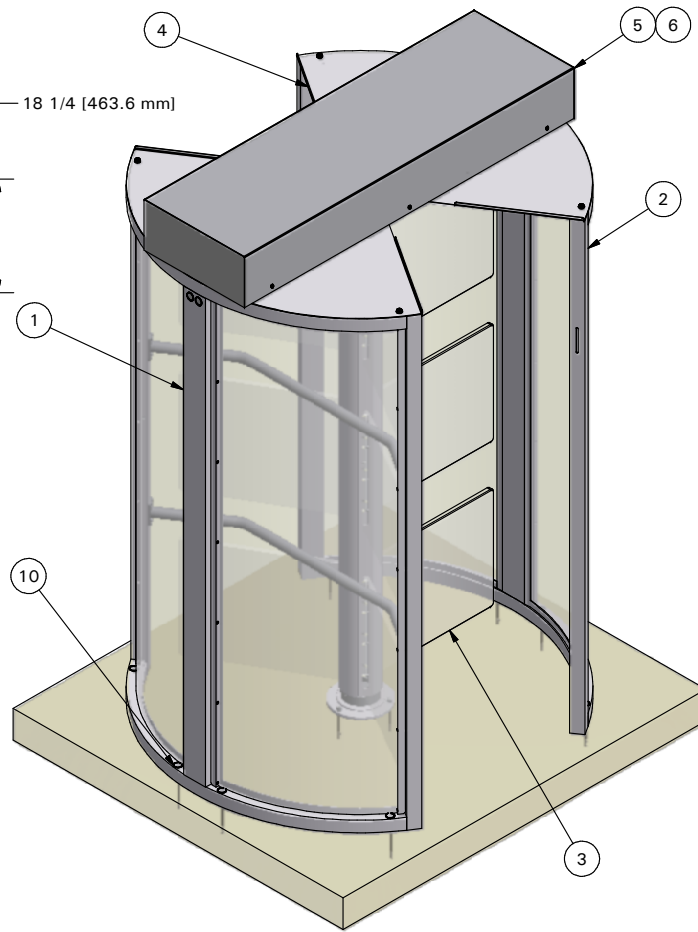
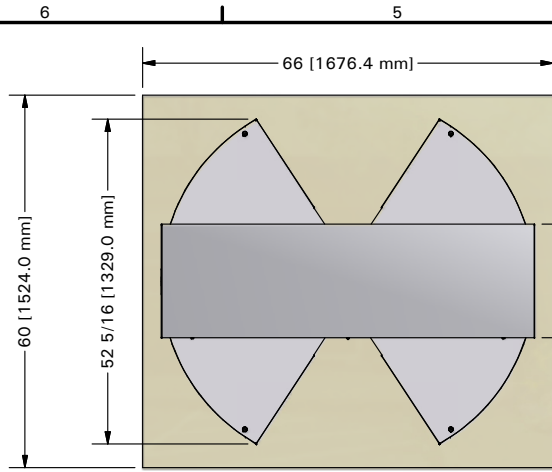
*Key Bypass is standard with a Fail Lock configuration.

Technical specifications

Power supply ¹	110 VAC (220 VAC optional), 50/60 Hz Converted to 24 Volt
Power consumption ¹	Less than 1 amp at 110 VAC
Working temperature	5°F to 110°F
Connection	The electrical full height turnstile communicates with most authorization systems using potential free contacts.

¹Only for electrical models





GENERAL NOTES:

THT-100CSTG = 1 DIRECTION ELECTRICALLY CONTROLLED.
 THT-100CSTG2 = 2 DIRECTIONS ELECTRICALLY CONTROLLED.

MINIMUM PAD SIZE SHOWN. MUST BE LEVEL WITHIN 1/4".

BRACE BARRIER POST AT TOP TO ADJACENT SURFACE.

ALLOW 8" [203MM] FOR REMOVAL OF LIFT-OFF COVER.
 ALTERNATE COVERS AVAILABLE.

ELECTRICAL NOTES:

POWER SERVICE OPTIONS:

1. 24 VDC
2. 110 VAC SINGLE PHASE
3. 220 VAC SINGLE PHASE 50/60HZ
4. 220 VAC DUAL PHASE 50/60HZ

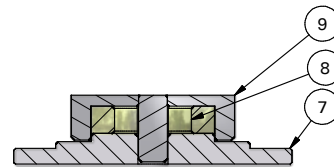
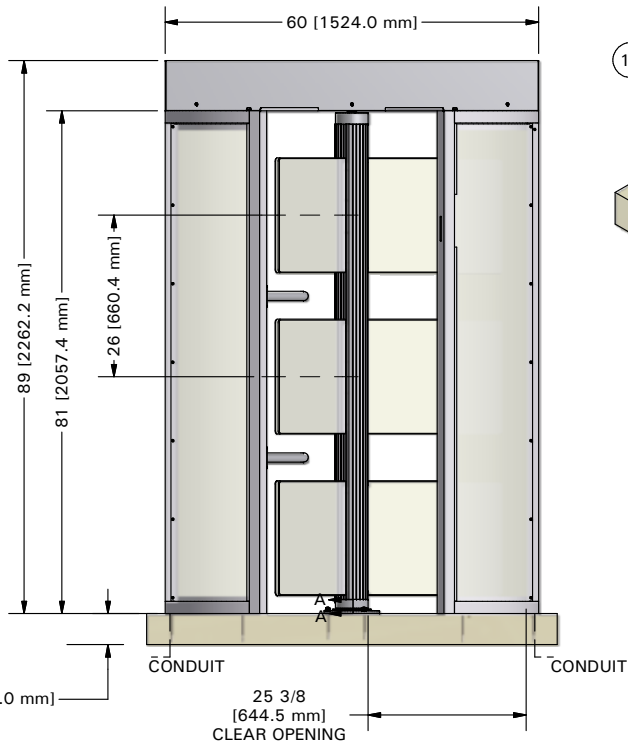
15A MAINS SERVICE REQ'D

4 LOCATIONS AVAILABLE FOR CONDUIT ACCESS.

AUTHORIZATION, FIRE ALARM REQUIRES DRY CONTACT FROM ACCESS CONTROL.

CODED NOTES:

1. BARRIER ASSEMBLY, WELDED - ANODIZED ALUMINUM WITH LEXAN PANELS AND STAINLESS STEEL BARRIER BARS
2. SHIELD ASSEMBLY, WELDED - ANODIZED ALUMINUM WITH LEXAN PANELS
3. ROTOR ASSEMBLY (3) - ANODIZED ALUMINUM WITH LEXAN ARM PANELS
4. CEILING PLATE - ANODIZED ALUMINUM
5. MECHANISM CHANNEL - STEEL (WHITE ALUMINUM POWDERCOAT)
6. CHANNEL COVER - STAINLESS STEEL
7. BASE PLATE - ANODIZED ALUMINUM
8. BOTTOM BEARING
9. BOTTOM FLANGE
10. ANCHOR BOLTS (11), PROVIDED



SECTION A-A
 BOTTOM BEARING / BASE PLATE
 SCALE 1/4

