

THT-100ASTG Full Height Turnstile



Roto-guard full security turnstile

Boon Edam's THT-100ASTG full security turnstile design ensures secure, controlled, unsupervised access to high security areas. Available in single rotor, and a space-saving tandem configuration (THT-100TASTG).

Fabricated from heavy gauge anodized aluminum, this highly attractive and versatile turnstile is designed for many years of reliable service. The THT-100ASTG is available in several color schemes to provide cost efficient and aesthetic access control to any facility.

The three-rotor section design provides comfortable passage space while maintaining high security performance. The full security turnstile can be one- or two-way electrically controlled with any combination of fail-lock or fail-safe operation.

'Heavy gauge anodized aluminum, available in several color schemes'

Construction

- Turnstiles are constructed of heavy-duty anodized aluminum.
- Transparent shield assembly design minimizes claustrophobic effect and increases visual security.
- One-way mechanical turnstiles use a hardened ratchet assembly to direct traffic flow.
- Electric turnstiles use a heavy duty electro-mechanical ratchet and pawl operating mechanism to restrict traffic flow.
- Standard self-centering feature automatically returns rotor assembly to the home position assuring accurate count and record of passage.
- Sealed top and bottom bearings provide free, easy rotation even in hostile environments.
- Tandem model (THT-100TASTG) offers double the traffic capacity while saving 24" width vs. using two single turnstiles.

Features & options

Characteristics	ASTG		TASTG	
	Std	Opt	Std	Opt
Fail-lock or Fail-safe (for electrical directions)	•		•	
Free or Locked Exit (for mechanical direction)	•		•	
Self-Centering Rotor	•		•	
Clear Anodized Construction	•		•	
Time-out Relay	•		•	
Pulse Relay	•		•	
Red and Green Indicator Lights	•		•	
Dual Shield		•	•	
Custom Color		•		•
Rotation Detection Switch		•		•
Home Position Switch		•		•
Heel Protectors		•		•
Remote Release Button		•		•
Card Reader Box		•		•
Key Bypass*		•		•
Hydraulic Speed Control		•		•

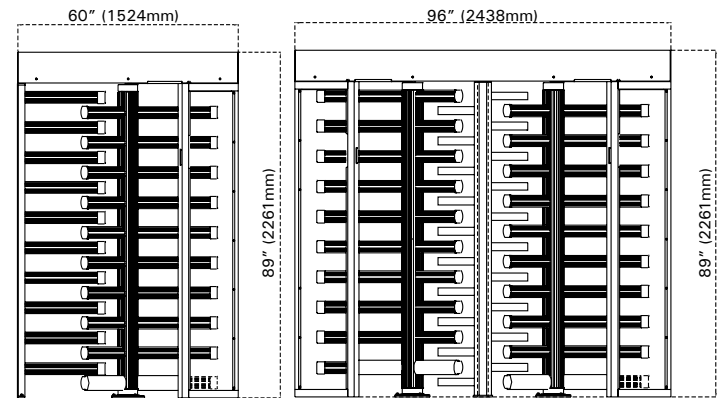
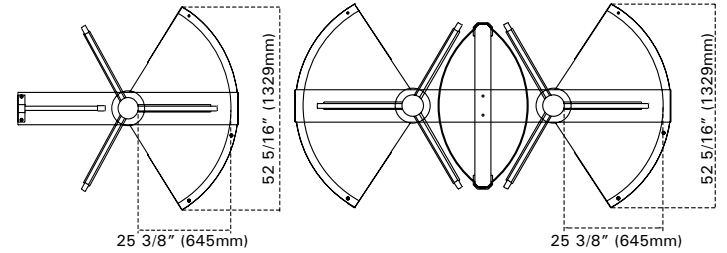
*Key Bypass is standard with a Fail-lock configuration.

Dimensions

Model	Height	Width	Depth	Interior Height	Shipping Wt.
THT-100ASTG	89"	60"	52 5/16"	81"	700 lbs.
THT-100TASTG	89"	96"	52 5/16"	81"	1200 lbs.

THT-100ASTG FOOTPRINT

THT-100TASTG FOOTPRINT

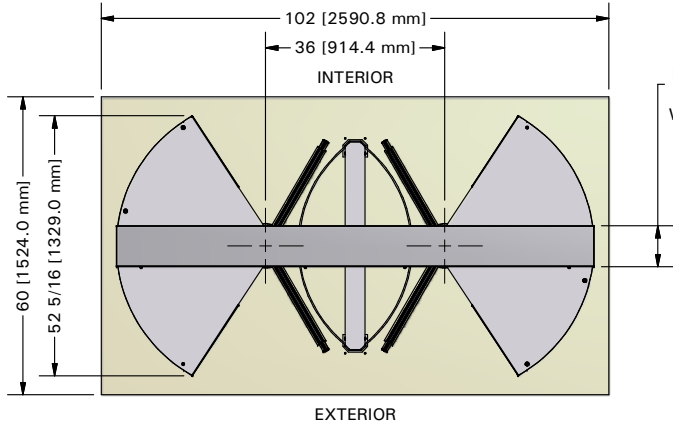


Technical specifications

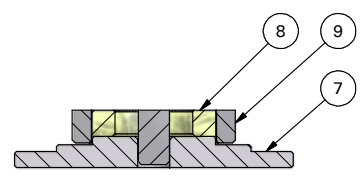
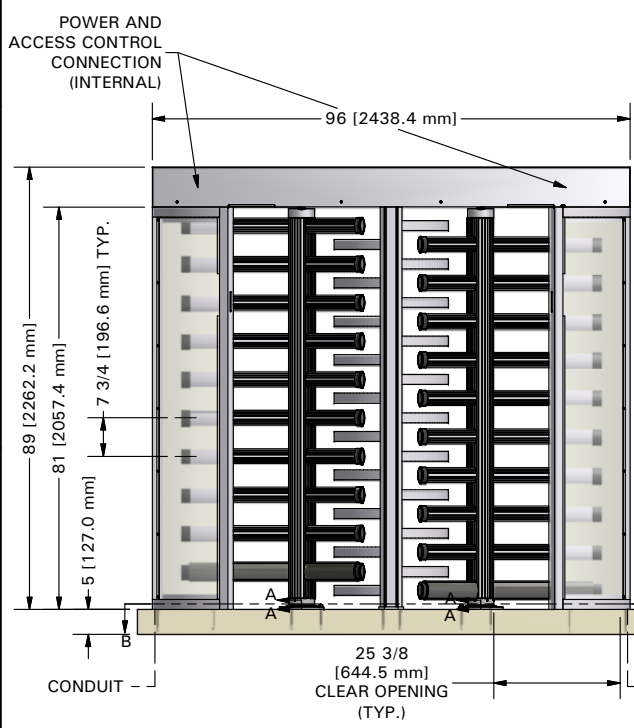
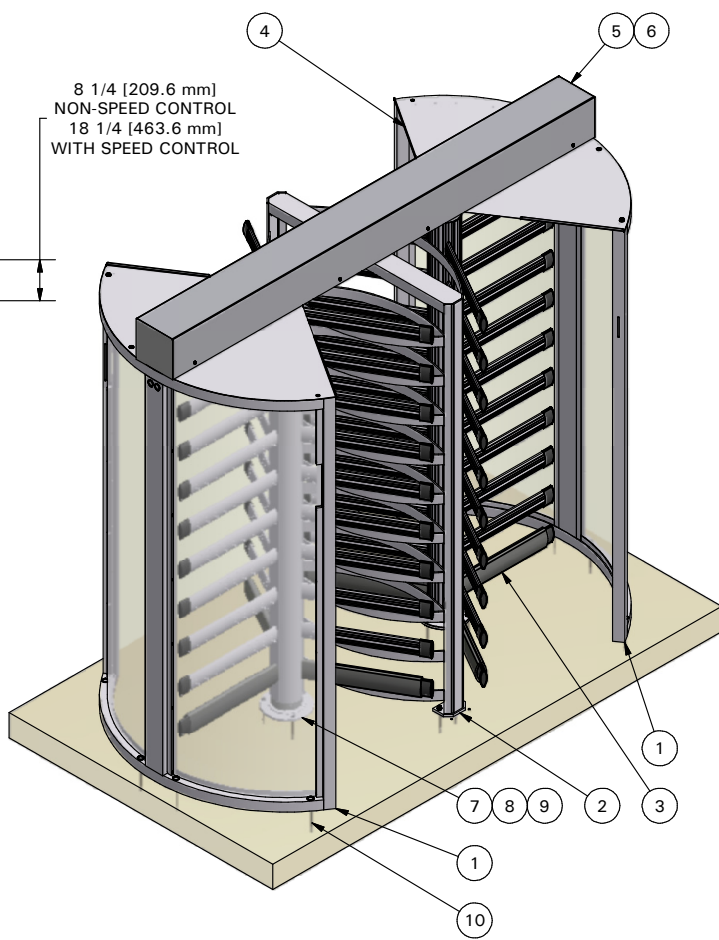
Power supply ¹	110 VAC (220 VAC optional), 50/60 Hz Converted to 24 Volt
Power consumption ¹	Less than 1 amp at 110 VAC
Working temperature	5°F to 110°F
Connection	The electrical full height turnstile communicates with most authorization systems using potential free contacts.

¹Only for electrical models





8 1/4 [209.6 mm]
NON-SPEED CONTROL
18 1/4 [463.6 mm]
WITH SPEED CONTROL



GENERAL NOTES:

THT-100TASTG = 1 DIRECTION ELECTRICALLY CONTROLLED.
THT-100TASTG2 = 2 DIRECTIONS ELECTRICALLY CONTROLLED.
THT-100MTASTG = MECHANICAL UNIT.

ANODIZED ALUMIUM CONSTRUCTION.

MINIMUM PAD SIZE SHOWN. MUST BE LEVEL WITHIN 1/4".

BRACE SHIELD AT TOP TO ADJACENT SURFACE.

ALLOW 8" [203MM] FOR REMOVAL OF LIFT-OFF COVER.
ALTERNATE COVERS AVAILABLE.

ELECTRICAL NOTES:

POWER SERVICE OPTIONS:

1. 24 VDC
2. 110 VAC SINGLE PHASE
3. 220 VAC SINGLE PHASE 50/60HZ
4. 220 VAC DUAL PHASE 50/60HZ

15A MAINS SERVICE REQ'D

4 LOCATIONS AVAILABLE FOR CONDUIT ACCESS.

AUTHORIZATION, FIRE ALARM REQUIRES DRY CONTACT FROM ACCESS CONTROL.

CODED NOTES:

1. SHIELD ASSEMBLY, WELDED - (2)TYP. ANODIZED ALUMINUM WITH LEXAN PANELS
2. BARRIER ASSEMBLY, WELDED - ANODIZED ALUMINUM
3. ROTOR ASSEMBLY, WELDED (3) - (2)TYP. ANODIZED ALUMINUM
4. CEILING PLATE - ANODIZED ALUMINUM
5. MECHANISM CHANNEL - ALUMINUM (N.S.C) OR STEEL (S.C.)
6. CHANNEL COVER - STAINLESS STEEL
7. BASE PLATE - ANODIZED ALUMINUM
8. BOTTOM BEARING
9. BOTTOM FLANGE
10. ANCHOR BOLTS (18), PROVIDED

BOON EDAM
Your Entrance. Our Technology.
402 McKinney PKWY, Lillington, NC 27546 - (910) 814-3600 © BOON EDAM

Dwg #:

Customer:

Job #:

Contractor:

Architect:

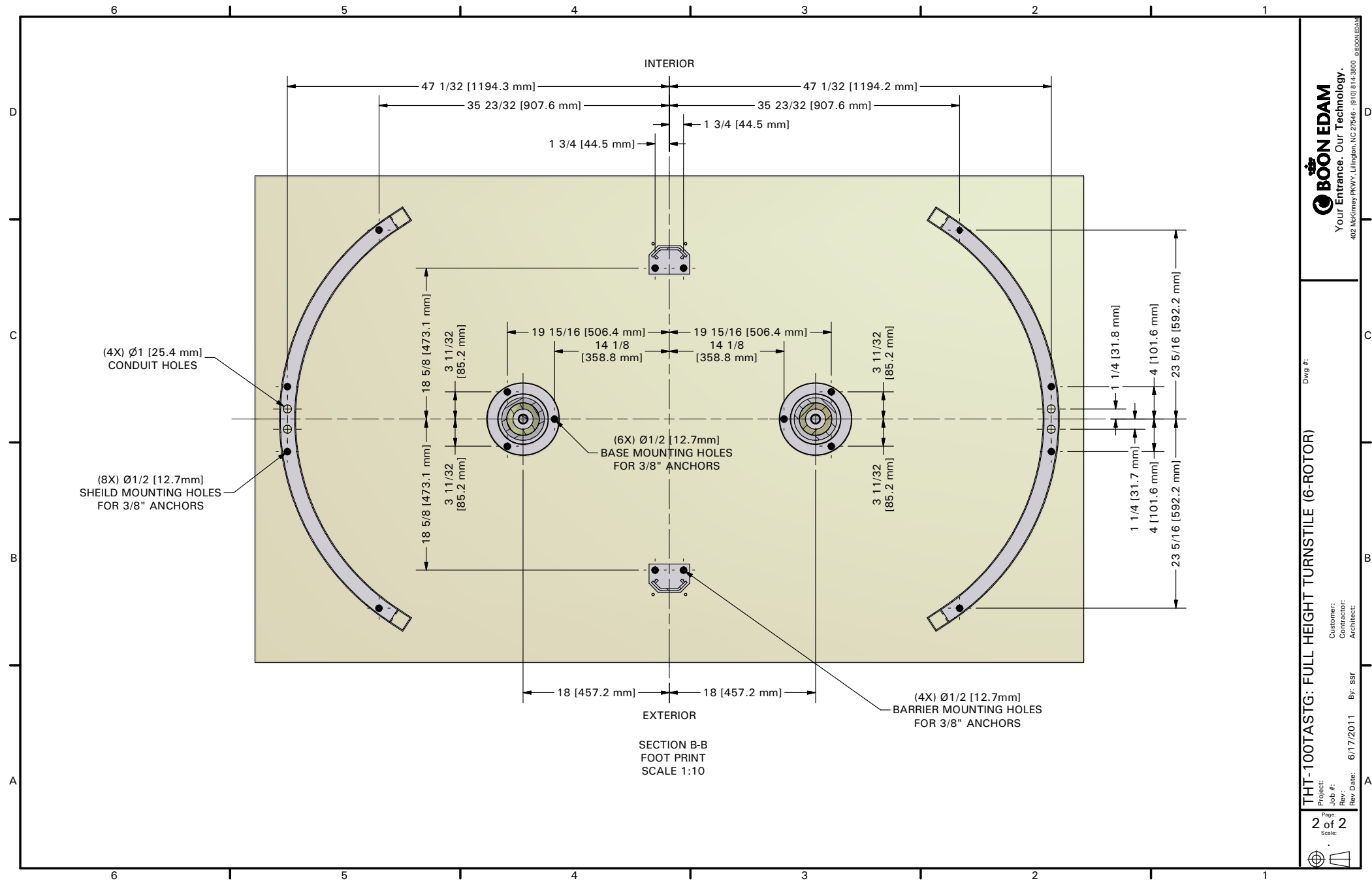
6/17/2011 By: SSR

Rev Date:

Page: 1 of 2

Scale: 1:25

THT-100TASTG: FULL HEIGHT TURNSTILE (6-ROTOR)



INTERIOR

EXTERIOR


SECTION B-B
FOOT PRINT
SCALE 1:10

(4X) Ø1 [25.4 mm]
CONDUIT HOLES

(8X) Ø1/2 [12.7 mm]
SHEILD MOUNTING HOLES
FOR 3/8" ANCHORS

(6X) Ø1/2 [12.7 mm]
BASE MOUNTING HOLES
FOR 3/8" ANCHORS

(4X) Ø1/2 [12.7 mm]
BARRIER MOUNTING HOLES
FOR 3/8" ANCHORS



BOON EDAM

 Your Entrance. Our Technology.

402 McKinney PKWY., Lillington, NC 27546 (910) 814-3600 © BOON EDAM

Project: _____ Dwg #:
 Job #: _____
 Rev: _____ Customer: _____ Contractor: _____
 Rev Date: 6/17/2011 By: SSR Architect: _____

Page: 2 of 2
 Scale: _____